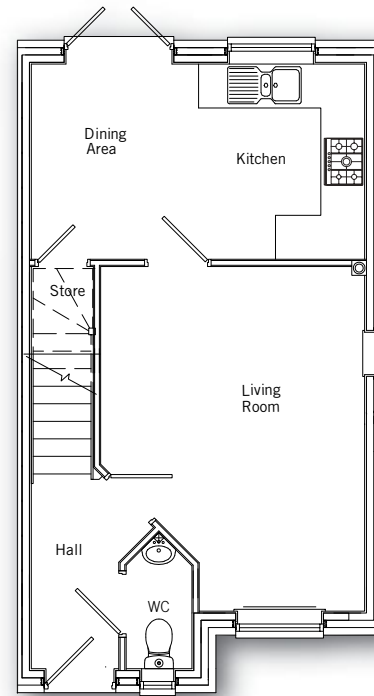
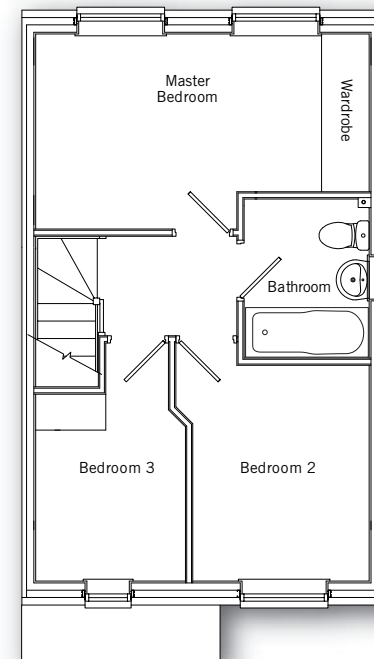


THE MIDDLETON



Ground floor

Living Room	3.61m x 4.71m (max) 11' 10" x 15' 6" (max)
Dining Area/Kitchen	2.73m x 4.56m 9' 0" x 14' 11"



First floor

Master Bedroom	2.73m x 4.56m (max) 8' 11" x 14' 11" (max)
Bedroom 2	2.41m x 2.96m 7' 11" x 9' 8"
Bedroom 3	2.05m x 3.26m (max) 6' 9" x 10' 8" (max)