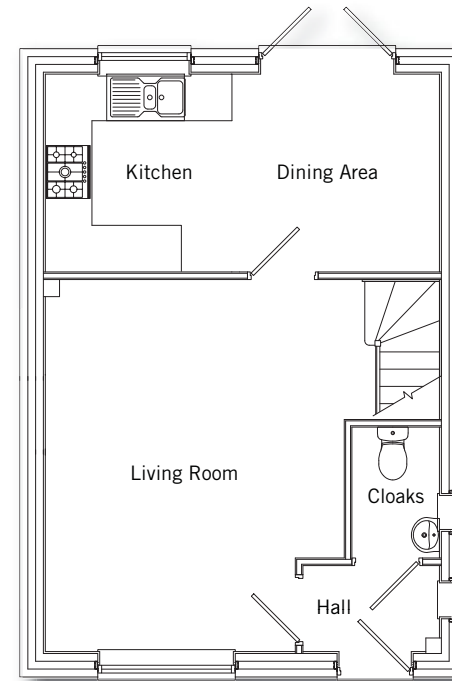
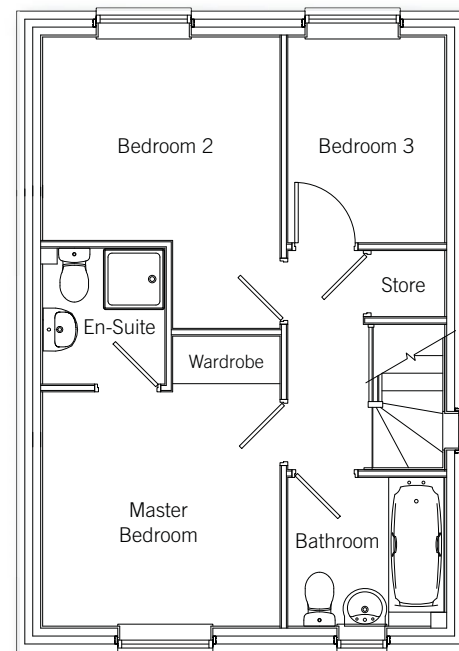


THE WILLOW



Ground floor

Living Room	4.21m x 4.75m (max) (13'10" x 15'7") (max)
Dining Area	2.45m x 2.69m (8'0" x 8'8")
Kitchen	2.61m x 2.69m (8'5" x 8'8")



First floor

Master Bedroom	2.96m x 3.74m (max) (9'7" x 12'3") (max)
Bed 2	2.96m x 3.71m (max) (9'7" x 12'2") (max)
Bed 3	2.01m x 2.69m (6'9" x 8'8")