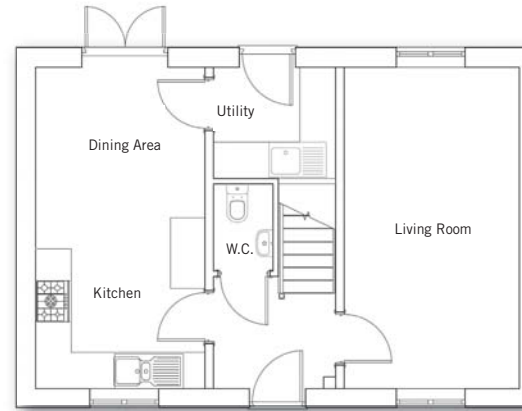
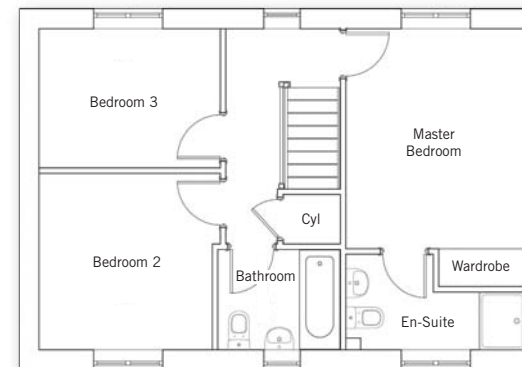


THE MILTON



Ground floor

Living Room	5.52m x 3.05m (18'1" x 10'0")
Kitchen/Dining Area	5.52m x 2.95m (18'1" x 9'8")
Utility	2.13m x 1.90m (6'10" x 6'3")



First floor

Master Bedroom	3.11m x 4.43m (max) (10'2" x 14'6") (max)
Bedroom 2	3.02m x 3.24m (max) (9'9" x 10'6") (max)
Bedroom 3	2.40m x 3.24m 7'9" x 10'6"