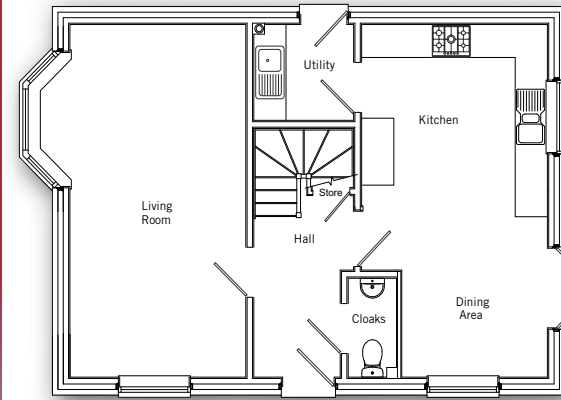
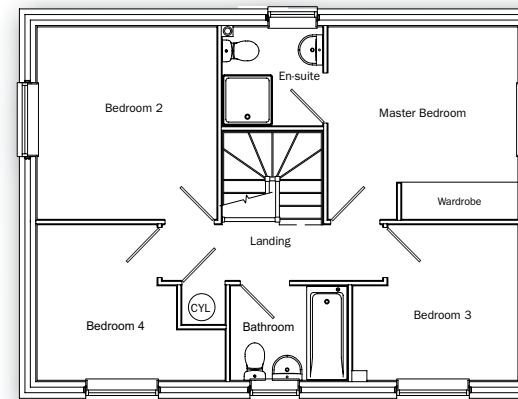


# THE ASHFORD



## Ground floor

Living Room	3.27m x 6.42m (10'8" x 21'0")
Kitchen and Dining Area	3.46m x 6.42m (max) (11'3" x 21'0") (max)
Utility	1.74m x 1.86m (5'9" x 6'1")



## First floor

Master Bedroom	3.50m x 3.51m (max) (11'5" x 11'6") (max)
Bedroom 2	3.32m x 3.50m (10'9" x 11'6")
Bedroom 3	2.82m x 3.06m (max) (9'3" x 10'0") (max)
Bedroom 4	2.82m x 3.46m (max) (9'3" x 11'3") (max)